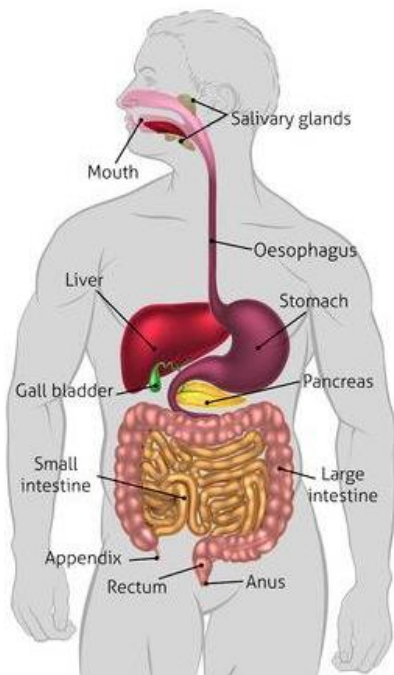


Knowledge Organiser Year 4 (Autumn 2022)

We learn science because it helps us to understand the world around us. We learn to ask and answer our own and others' questions, and to tell others what we have found out.

Digestive system

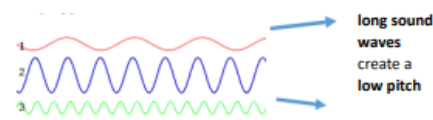


Salivary Glands	An organ in the mouth which secretes saliva.
Oesophagus	A tube connecting the throat to the stomach.
Stomach	An organ containing enzymes and acid to digest food.
Enzyme	A substance that breaks down food particles in the body.
Small Intestine	An organ which absorbs nutrients from food.
Large Intestine	An organ which absorbs water from food.

Sound

Sound is created by **vibrations**. Vibrations travel from a source through a medium (a solid, liquid, or a gas) to reach your **ear**. The particles in the medium vibrate as the **sound wave** travels through it. Sounds sound different due to their **pitch** and their **volume**.

The roar of a lion is low pitched.



The squeak of a mouse is high pitched.



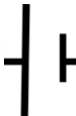
Electricity

Electrical circuits are made out of the following **components**.

Each component has a symbol which you use in diagrams.



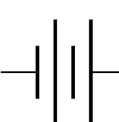
Motor = turns electrical energy into mechanical (movement) energy.



Cell = provides energy to the circuit and pushes electricity



Buzzer = turns electrical energy into sound energy.



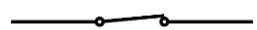
Battery = a collection of cells.



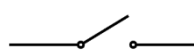
Wire = allows electricity to flow around a circuit.



Bulb = turns electrical energy into light energy.



Closed switch – electricity can flow around the circuit.



Open switch – electricity cannot flow around the circuit.

Insulators—materials which do not conduct electricity well/ do not allow electricity to pass through.



plastic



glass



fabric



wood



air

Conductors- materials which do conduct electricity well / do allow electricity to pass through. Metals are usually good conductors.



graphite



copper



water



steel



gold