



Moreton Church of England Primary School



Moreton Church of England Primary School



Medical & First Aid Policy

Written by: N Batt, Headteacher
Date: April 2026

Agreed by Governors (Date):
Signed (CoG):



Introduction

Under the Children and Families Act 2014 the governing body is responsible for making arrangements for pupils at Moreton Church of England Primary School with medical conditions. This is to ensure that all children with medical conditions, in terms of both physical and mental health, are properly supported in school so that they can play a full and active role in school life, remain healthy and achieve their academic potential.

In addition the governors are also responsible for the first aid and administration of medicines in the school under the Health and Safety (First Aid) Regulations. The implementation of these is through the Headteacher and Health and Safety Coordinator.

This policy is to be read in conjunction with our other policies; in particular our SEN and Health & Safety policies.

Administration of Medicines and/or Medical Care Provision

Moreton Church of England Primary School is committed to ensuring that pupils at school with medical conditions are properly supported so that they have full access to education, including school trips and physical education. This policy sets out our arrangements for this to happen. We consult with health and social care professionals, pupils and parents to ensure that the needs of children with medical conditions are properly understood and effectively supported. Our aim is to clearly capture the steps required to help the child to eventually manage their condition and overcome any potential barriers to their education. Some children may also have special educational needs (SEN) and may have a statement, or Education, Health and Care (EHC) plan which brings together health and social care needs, as well as their SEN provision. The flowchart shown in Annex A will be used to determine whether an IHCP is required.

Children at school with medical conditions will require support to manage their condition to keep them well and may also require monitoring and/or interventions in emergency circumstances. As children's health needs may change over time, in ways that cannot always be predicted, any child with a medical condition will have regular reviews with our SENCo or member of SLT. This may be weekly, monthly, termly or yearly depending on the recommendation from health professionals and in consultation with parents. This will be based on the individual need of each child.

Where a child requires medical care either an IHCP is required or a form is required to be completed (Annex B), indicating clear written instructions on the circumstances of either the medication or procedure required. We will ensure:

- The child has 2 dedicated members of staff who are both willing to undertake the role and have been suitably trained;
- Training needs are assessed and reviewed annually;
- The child has their own file and records which are kept digitally;
- Dedicated medibox for the child;
- All relevant staff are made aware of the condition;
- Staff absences are covered;
- Supply teachers or cover supervisors are fully informed;



Moreton Church of England Primary School



- Risk assessments for school visits (including residential), sporting activities (if required) and other school activities outside the normal timetable are completed for the individual;
- Healthcare plan is regularly reviewed.

As part of pupils' development, we will work together with parents to encourage children to become competent in managing their own health needs and medicines. Any responsibility for this will be reflected on the relevant paperwork. Wherever possible, children will be allowed to carry their own medicines and relevant devices or have suitable access to their medicines for self-medication quickly and easily eg.. asthma inhalers, blood glucose testing meters or adrenaline pens. Appropriate levels of supervision will be given as required.

There may be times where the school needs to apply flexibility in attendance for the child and involve, for example, programmes of study that rely on part-time attendance at school in combination with alternative provision arranged by the local authority. We will work with parents and healthcare professionals to consider how to reintegrate children back into school after a period of absence to ensure that they are properly supported with their educational, social and emotional needs associated with their medical condition.

In line with our safeguarding duties we will ensure that pupils' health is not put at unnecessary risk from, for example, infectious diseases. We would not accept a child in school at times where it would be detrimental to the health of that child or others.

When a child moves from year 6 to year 7 transitional arrangements between Moreton Church of England Primary School and the relevant secondary school will take place. Every effort will be made to ensure that suitable arrangements are discussed and put into place within two weeks.

At times children will require medication throughout the school day. An appropriately trained member of staff will administer medication provided we have the following:

- Clear written instructions from the parent (Annex C)
- Medication that is in the original container dispensed by the pharmacist or
- In the case of non-prescribed drugs in an unopened correctly labelled bottle which is in date. We will not administer Aspirin or medicines containing ibuprofen unless prescribed by a doctor
- For school trips parents will indicate any required medication to be given

In the case of eye-drops, creams and ointments, these will be kept in the School Office and the medication will be given to the child to administer themselves, where possible. Any medication taken during school hours will be entered onto the Medical records on CPOMs. Sun cream is not applied by staff. We ask that sun cream is brought into school and is labelled with the name and class of the pupil. Children are then given appropriate times before lunch or afternoon sessions to apply the cream themselves as required.



Moreton Church of England Primary School



Parents should make teachers aware of how a child's medical condition may impact on their participation in school trips and visits or in sporting activities. This should be undertaken where required for ongoing conditions, through an appointment with the trip leader. Following any hospital treatment received, a risk assessment may be required and an appointment should be made to complete this with either the office or senior member of staff. Wherever possible arrangements for the inclusion of pupils in such activities will be made, with any necessary adjustments, unless evidence from a clinician such as a GP states that this is not possible.

First Aid Provision

'First Aid is the initial assistance or treatment given to someone who is injured or suddenly taken ill'. Staff administering First Aid should seek to assess the situation, protect themselves and the casualty from further danger, deal with any life-threatening condition and where necessary obtain medical assistance or refer the casualty to hospital as quickly as possible.

Arrangements for First Aid

The School will provide materials, equipment and facilities to provide First Aid. First Aid medical posters are displayed around the school which provides information on the location of the first aid kits. Our standard first aid kits are kept in the medical room by the front office. All classes will have a basic first aid kit which contains wipes, plaster and gloves. The contents of the kits will be checked 6 monthly in September and February by a qualified first aider. As a school we have also purchased equipment for emergency use such as antihistamines, asthma inhalers, paracetamol suspension and a defibrillator. We follow the Department of Health protocol in the use of these. We do not currently store generic school adrenaline auto-injector pens for anaphylaxis conditions but we are constantly reviewing this in line with upcoming health regulations.

The School (paediatric) First Aiders are:

Main First Aider: Mr C Batt
Additional First Aider: Mrs C Chalkley and Mrs B Barros

Before undertaking any off-site activities, the level of first aid provision will be assessed by the Educational Visit Coordinator or the Headteacher and at least one first aid kit will be taken along.

Sharp boxes will be used for the disposal of needles and other sharps. A bin is provided for medical waste to be disposed of appropriately. These are kept in the medical room/office.

Additionally; a number of teachers and support staff have undertaken an accredited paediatric first aid training.



Moreton Church of England Primary School



Information on First Aid Arrangements

The Health and Safety Coordinator will inform all employees at the school of the following:-

- The arrangements for recording and reporting of accidents;
- The arrangements for First Aid;
- Those employees who are qualified First Aiders;
- The location of the First Aid Kits.

In addition we will ensure that signs are displayed throughout the School providing information on the location of the First Aid Box.

All members of staff will be made aware of the School's First Aid Policy. No member of staff should attempt to give First Aid unless they have been trained. The school uses CPOMs as an online system which records any first aid treatment given. Where necessary serious injuries are recorded digitally; this is for both employees and pupils. If emergency First Aid is administered to a child, the parent/guardian will be informed.

Accidents involving bumps to a Pupil's head

The consequence of an injury from an accident involving a bump or blow to a child's head is not always evident immediately and the effects may only become noticeable after a period of time. In the event of an accident involving a bump to a pupil's head, we will take the following action:

- Provide treatment and assess the injury
- Phone the parent
- If a parent does not answer a message will be left on their phone and a bump form completed to be sent home
- At times, staff may also inform parents, carers or after school provision at the end of the day as a follow up

Transport to hospital or home

The main first aider or a member of senior leadership, will determine the appropriate action to be taken in each case where the injury requires urgent medical attention. If hospital treatment is required, then the child's parent/guardian will be called for them to collect their child and take over responsibility. If immediate emergency treatment is required, an ambulance will be called and the child's parent or guardian will be notified. If no contact can be made with parent/guardian or designated emergency contact, then the child will be transported to hospital with a member of staff. The staff member will support the child alongside the emergency services acting in loco of the parent/s or guardian. Depending on the circumstances, the situation may change and staff reserve the right to amend action to ensure the best health care for the child.

When arrangements are made for transporting a child for emergency treatment, then the following points will be adhered to:-

- A staff member will support the child in the emergency vehicle if allowed;
- A second member of staff will follow to support with supervision of the injured child;
- A member of staff will stay with the child until the parent arrives.



Moreton Church of England Primary School



Linked policies

This policy should be read in conjunction with the following:

- Health & Safety Policy
- Supporting pupils with medical conditions
- Intimate Care policy
- SEND policy

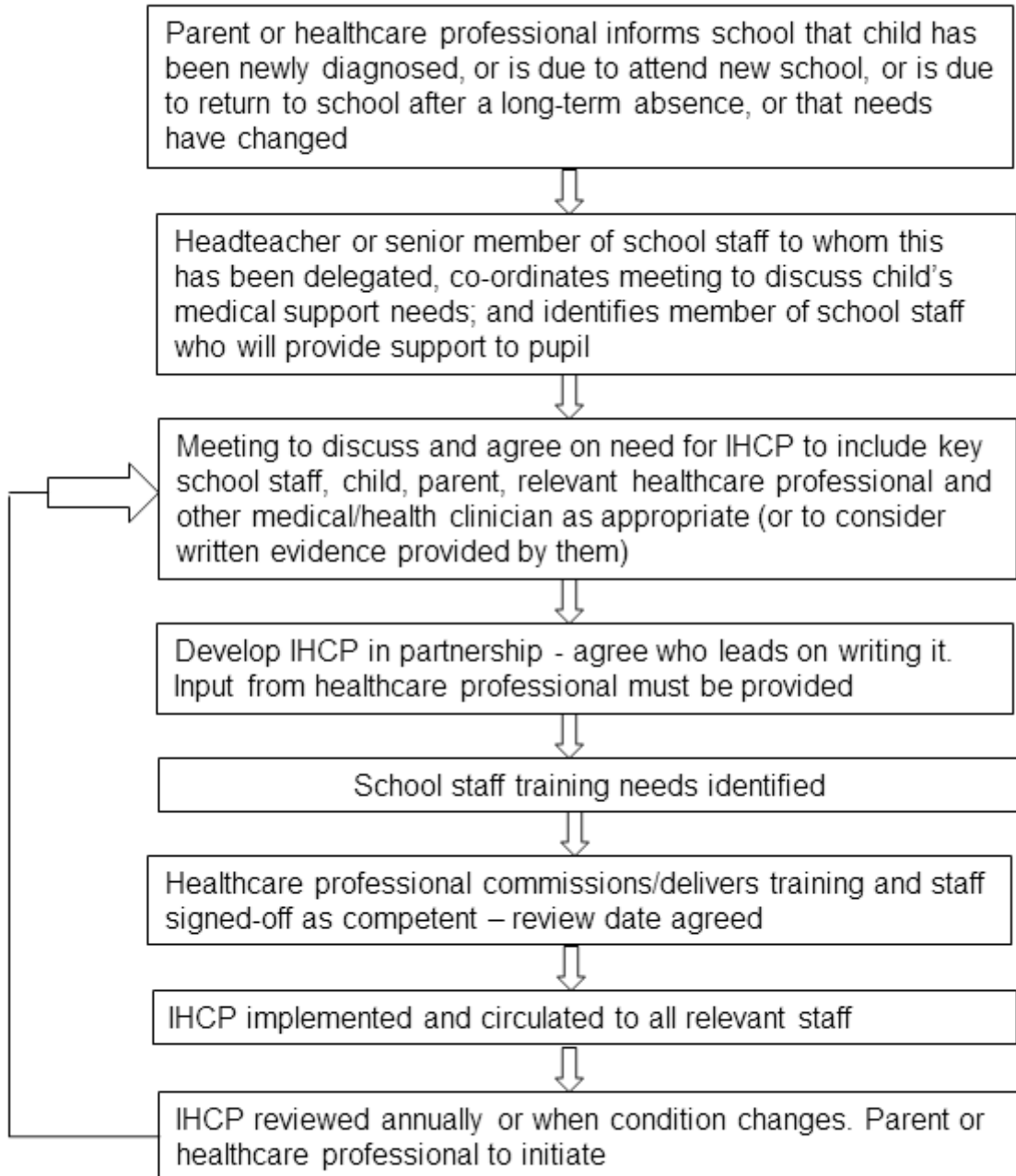
Linked guidance

<https://www.hweclinicalguidance.nhs.uk/all-clinical-areas-documents/download?cid=3371&checksum=285da2198b2b496c9d447cc4ac6b0734>

<https://www.hweclinicalguidance.nhs.uk/all-clinical-areas-documents/download?cid=1092&checksum=6a2feef8ed6a9fe76d6b3f30f02150b4>



Annex A: Process for developing Individual Healthcare Plans





Moreton Church of England Primary School



Annex B: Request to administer medical care

The school will not supervise your child's medical needs unless you complete and sign a request form, and the Headteacher has agreed that school staff are fully trained and can undertake the relevant care provided. This form may be used in conjunction with a IHCP. If medicine is required , then a separate form is required.

DETAILS OF PUPIL

Surname: _____ Forename(s) _____

Address: _____

Date of Birth: _____ Class: _____

Condition or illness:

Triggers/Signs/Symptoms:

MEDICAL CARE

Type of medical care required:

Treatment requirements:

As required		Hourly		Daily		Other	
----------------	--	--------	--	-------	--	-------	--

Details of treatment:



Moreton Church of England Primary School



Length of time support is required:

Can the child manage their care themselves? Details:

Procedures to take in an emergency:

If consistent adult support is required for medical conditions eg.. diabetes an IHCP will be completed with the SENCo and relevant health professionals.

CONTACT DETAILS

Name: _____ Relationship to pupil _____

Contact telephone numbers _____

Signed _____ Relationship to pupil _____



Moreton Church of England Primary School



Annex C: Request for school to administer medication

The school will not supervise the administration of your child's medicine unless you complete and sign a request form, and the Headteacher has agreed that school staff can supervise the administration of the medication.

DETAILS OF PUPIL

Surname: _____ Forename(s) _____

Address: _____

Date of Birth: _____ Class: _____

Condition _____ or _____ illness: _____

MEDICATION

Name/type of medication (as prescribed on the container) _____

For how long will your child take this medication? _____

Date dispensed: _____

FULL DIRECTIONS FOR USE

Dosage and method _____ Timing _____

Special precautions _____

Possible Side effects _____

Can child self administer _____

Procedures to take in an emergency _____

CONTACT DETAILS

Name: _____ Relationship to pupil _____

Contact telephone numbers _____

I understand that I must deliver the medicine personally to the school office and accept that this is a service which the school is not obliged to undertake

Signed _____ Relationship to pupil _____

